

S-SCORT VX-2

SSCOR, INC.



VX-2 2310V



EN1789 rated charging/retention bracket. Holds to a force of 10G and conducts vehicle power to run and charge the unit.

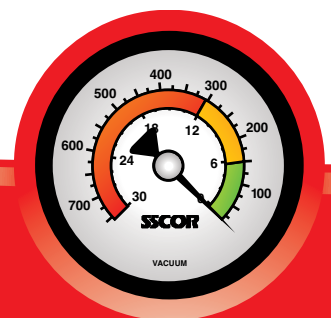
The S-SCORT® VX-2® is a portable, powerful battery powered suction unit that can be mounted in the action area of an ambulance and used as onboard suction. The optional charging/retention bracket connects the VX-2 to vehicle power at all times. With its variable regulator and gauge, outward facing controls, and drawing its power from the vehicle, the VX-2 is set-up for on-board suction. If portable suction is required at the scene, the VX-2 can easily

be removed from the retention bracket and used as portable suction, drawing power from its battery.

The VX-2 comes equipped with a battery care system that insures that the battery is charged to an optimal level, prevents deep discharge and indicates battery condition.

SSCOR also offers the EVX™. The EVX comes with a "Power Connected" light and a variable regulator and gauge. It also offers an optional charging/retention bracket.

Onboard suction that is not 'chained to the vehicle'!



OPTIONS!

Different configurations for different needs



	2310BV VX-2*	2310V VX-2	2309BV EVX*	2309 EVX
Size	17" L x 9" H x 5.25" W 43.2cm L x 22.9cm H x 13.3cm W			
Weight	8.6 lbs. or 3.9 kg			
Vacuum Pump	12V DC oil-less diaphragm. Clinical Airflow >=30LPM			
Regulator	Variable Regulator and Gauge			
Canister	Bemis canister For canister options, see http://www.sscor.com/pages04/canisters.htm			
Run Time (full charge)	45 minutes (+/- 10%)			
Battery Condition Indication	3 LED, 5 stage, battery condition indicator system		No	
Charging	Charge constantly from vehicle via the charging retention bracket or an optional AC/DC converter Part#80521-100 for land based AC/DC charging	Charge constantly from vehicle power using DC power cord (included) or an AC/DC converter Part#80521-100 for land based AC/DC charging	Charge constantly from vehicle via the charging retention bracket or an optional AC/DC charger Part#80533 for land based AC/DC charging	Charge constantly from vehicle power using DC power cord (included) or an AC/DC charger Part#80533 for land based AC/DC charging
Charging/Retention Bracket	Part#8310	No	Part#8310	No
DC Power Cord	Optional	Part#80665	Optional	Part#80665
230 Setup International Customers	Optional AC/DC charger Part#80529	DC Power Cord Part#80965; AC/DC converter Part#80522-100	Optional AC/DC charger Part#80529	DC Power Cord Part#80965; AC/DC charger Part#80529
Items Included	Suction Unit, Charging/Retention Bracket, 1200cc Bemis® Canister, patient tubing and HI-D® suction tip	Suction Unit, DC Power Cord, AC/DC Converter, 1200cc Bemis Canister, patient tubing and HI-D suction tip	Suction Unit, Charging/Retention Bracket, 1200cc Bemis Canister, patient tubing and HI-D suction tip	Suction Unit, DC Power Cord, AC/DC Charger, 1200cc Bemis Canister, patient tubing and HI-D suction tip

Call or look online at www.sscor.com for ordering information and for an illustrated parts and accessory list.



* shown with charging/retention bracket