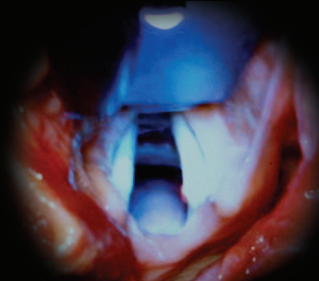
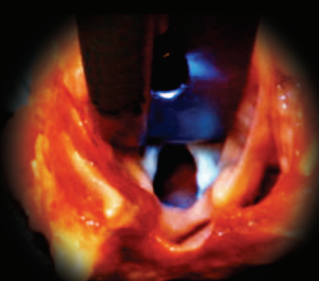


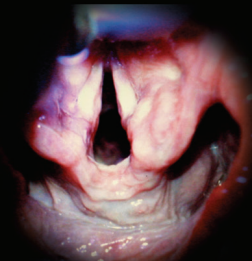
# INTUBRITE™



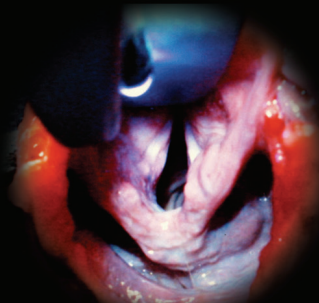
1. Shows improved anatomy definition; increased depth perception of vocal cords. GRADE 1 (White/Black light).



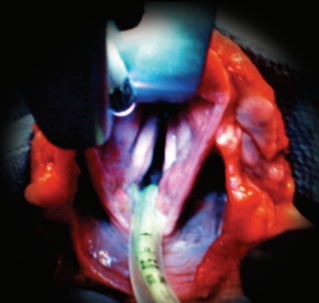
2. Shows an alternative view of GRADE 2 Anatomy (White/Black light).



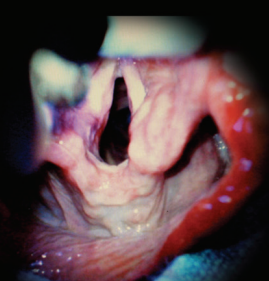
3. HyperVisualization System enhances anatomy view ensuring proper tube placement; potential diversion sites are clearly shown.



4. View of cricoid rings and vocal cords. GRADE 1 (White/Black light).

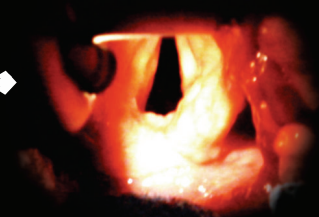


5. Vocal cords well defined with illuminated phosphorescent-coated stylet inside ET tube. GRADE 1 (White/Black light).

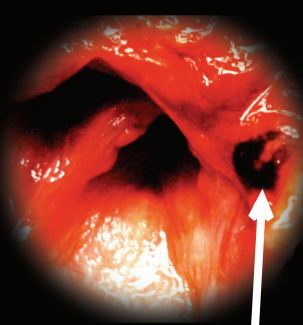


6. Cricoid rings clearly visible, cords well defined, anatomy outlined. GRADE 1 (White/Black light).

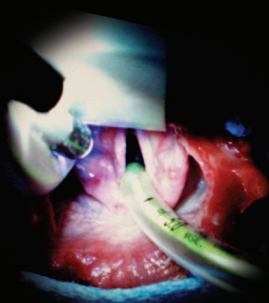
Comparable Views



7. Comparable view to #6, minimal visual definition. GRADE 1 (White incandescent light).



8. Demonstrates tissue trauma from missed ET tube insertion (blackened area); (Room Lighting).



9. HyperVisualization of ET tube confirms passage through vocal cords. GRADE 1 (White/Black light).



10. Comparable view to #5 and #9, visualization of the ET tube is lost at vocal cords, passage unconfirmed. GRADE 1 (White incandescent light).